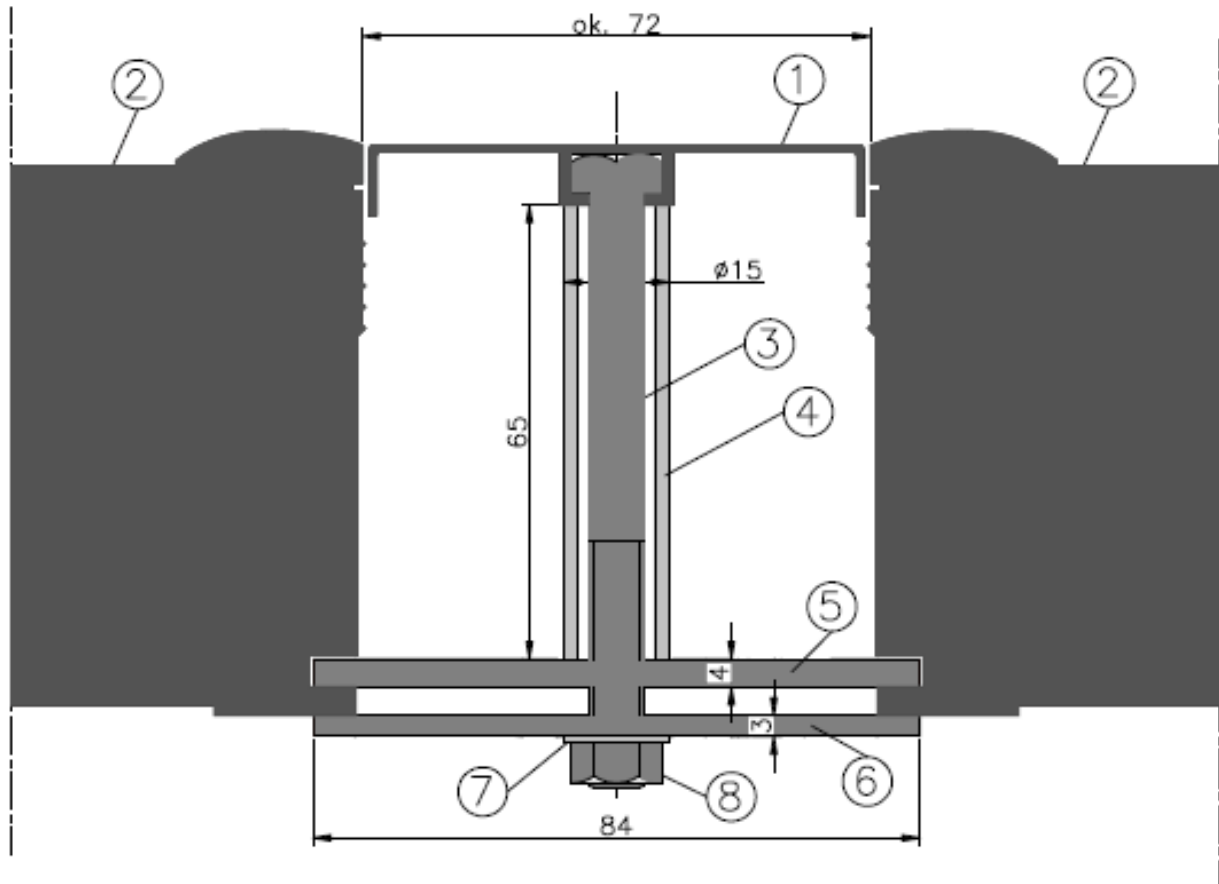


ASSEMBLY OF THE MASKING PROFILE



- 1 - Masking profile
- 2 - Solar collector
- 3 - Screw M 8 x of 90 mm
- 4 - Distance corner Al $\varnothing 15$ x 2 x of 65 mm
- 5 - Flat bar of DIN 1.4301 4 x 30 x of 84 mm
- 6 - Flat bar of DIN 1.4301 3 x 30 x of 84 mm
- 7 - Ø Pad 8.5 mm 8 - Nut M 8

Description of the technique of the assembly of the masking profile for the collector 2.0m²

Assembly of the set of the bottom and upper screw:

- 1 - to put the screw no. 3 in the profile masking with no. 1 in the distance of the 10 cm from its edge
- 2 - to put no. 3 on the twist cornets distance no. 4
- 3 - to put flat bars in no. 5 and in positions for the picture but next to press collectors with no. 6 to oneself so that the distance between them is 72 mm
- 4 - with the profile and the cornet to transfer the screw through holes of flat bars no. 5 and no. 6
- 5 - to put no. 3 on the screw pad no. 7 and to wind the nut no. 8

Description of the technique of the assembly of the masking profile for the collector 2.65m²

Assembly of the set of the centre screw:

- 1 - to put the screw no. 3 in the profile masking with no. 1 in the middle of his length.
- 2 - to put no. 3 on the twist cornets distance no. 4, flat bar no. 5, pad no. 7 and to tighten a nut with no. 8
- 3 - with the masking profile to put the flat bar of the centre screw into the crack of the collector

Assembly of the set of the bottom and upper screw:

- 4 - to put the screw no. 3 in the profile masking with no. 1 in the distance of the 10 cm from its edge
- 5 - to put no. 3 on the twist cornets distance no. 4
- 6 - to put flat bars in no. 5 and in positions for the picture but next to press collectors with no. 6 to oneself so that the distance between them is 72 mm
- 7 - with the profile and the cornet to transfer the screw through holes of flat bars no. 5 and no. 6
- 8 - to put no. 3 on the screw pad no. 7 and to wind the nut no. 8